

www.e-quality-eu.org

Michelle Joab

Modelling Quality
in Open Distance
Learning: ELUP

LIRMM,
Montpellier 2
University



Experience-based Quality in European ODL
E-QUALITY



**FINAL SEMINAR 21.-22.9.2006
SZCZECIN, POLAND**



Experience-based Quality in European ODL

E-QUALITY

Elup: a tool to model quality

- An editor based on general concepts
 - Role, activity, artefact, workflow
 - Role : Who (a role) does what (an activity)
 - What is produced (output artefact) or needed (input artefact) to perform an activity
 - How the activities are structured into relevant sequences (workflow).
- Using Unified Modeling Language
 - e-Learning Unified Process by analogy with Software Unified Process



Education and Culture

Socrates





Experience-based Quality in European ODL

E-QUALITY

Quality features

- Activities and workflows include quality features;
- Each item can be linked to related information
 - Norms
 - best practices,
 - quality indicators,
 - commitments of a quality charter



Education and Culture

Socrates





Experience-based Quality in European ODL

E-QUALITY

Elup: How to use it ?

- A single-user editor
 - A user can take advantage of Elup to describe freely the organization of his own institution
 - The user generates documentation from his data
 - Formats: HTML, PDF, XML
- A common core of data resulting from the project
 - A common set of roles, activities, workflows, quality criteria, quality indicators, charters
 - A set of best practices used in our institutions



Education and Culture

Socrates





Experience-based Quality in European ODL

E-QUALITY

Elup: How to use it ?

- The single-user software will be downloaded from the web site (Java, Mysql);
- The core data will be downloaded and imported into Elup:
 - Based on D2.2 (A conceptual model for ODL quality processes, D3.1 (GQPC), D4.3 (Core Training Material)
 - An XML file exported from the Best practices Database
 - An XML file with the core data (roles, activities, ...)



Education and Culture

Socrates





eLup: inserting a new role

The screenshot shows a web application window titled 'Pedagogical Planning * abc Teacher'. The main content area is a light blue 'Entry definition card' with the following fields and controls:

- Version:** 1
- Name:** Teacher (text input field)
- Synonym:** A large empty text area, an 'Add' button, and a smaller empty text input field.
- Category:** Role (dropdown menu)
- Definition:** The role of a teacher encompasses activities that occur through the whole of the learning event, from planning to feedback and evaluation. (text area)
- Buttons:** 'Save' and 'Close' at the bottom.

- *Teacher*



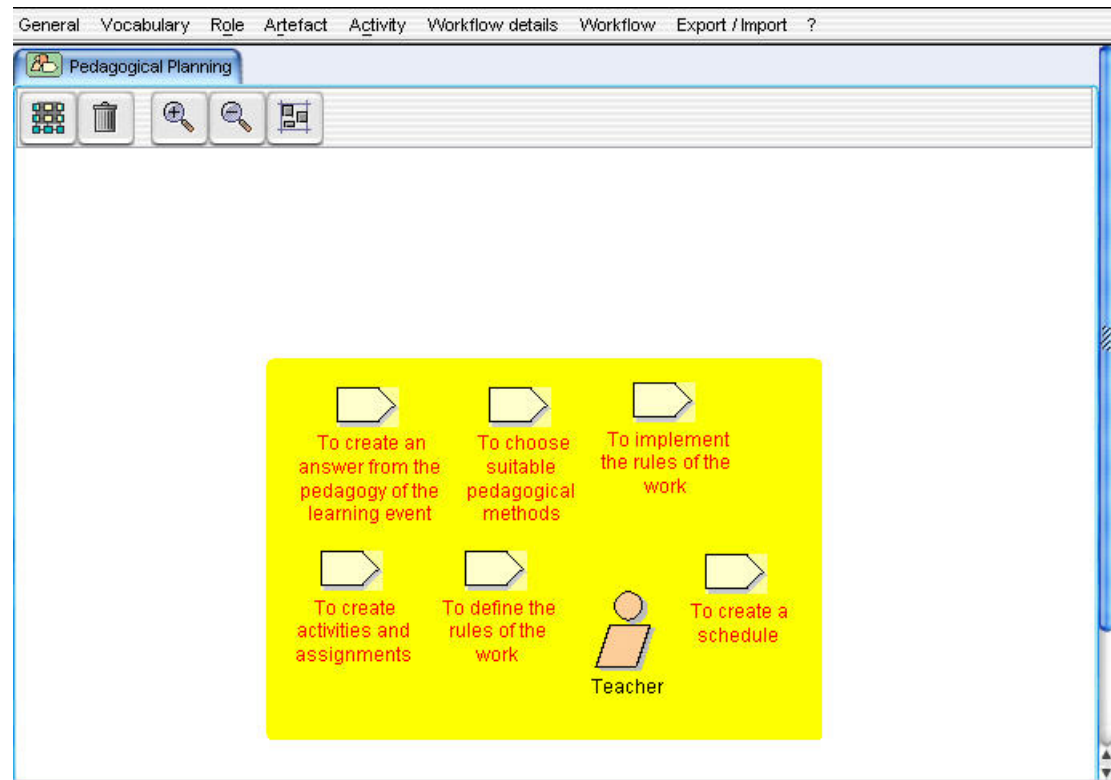
Define here the following quality qualifiers

Blocking factors and proposed corrective measures	
Best Practices text or linked to BP DB ?	
Quality indicators and Criteria	A precise schedule of the work including rules has been established. Before : documents distributed at the beginning of the learning event During : continuous assessment of each learner's working progress After : learners' post-learning event satisfaction questionnaire
Standards and norms Text or link to text of a norm	
General Quality Process Chart Text or link to text of GGPC	Document provided at the beginning of the course are specifying the work schedule, as well as each actor's commitments

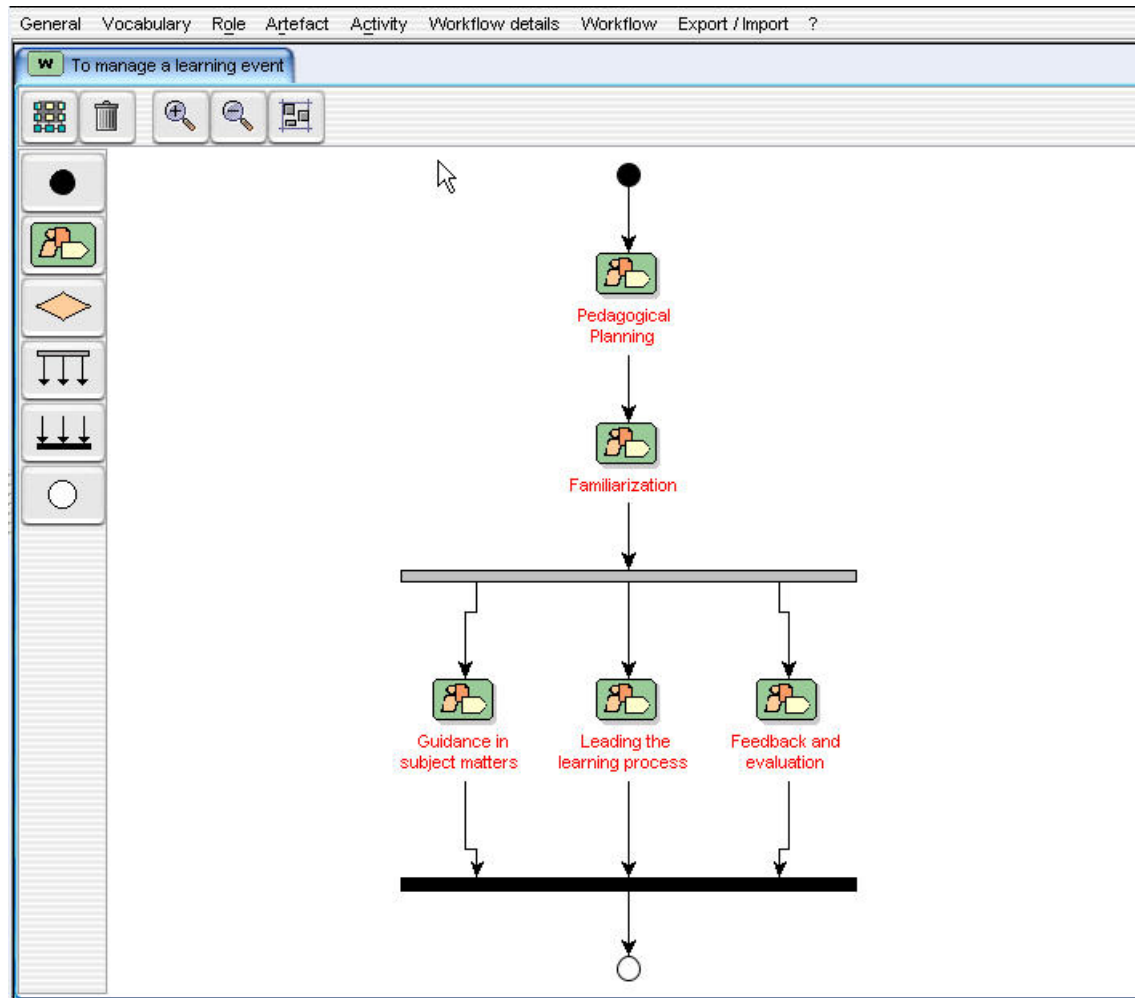
eLup:quality features
for an activity
To create a schedule



eLup: defining a workflow detail



- *Pedagogical planning*



eLup: To design
a workflow

- *To manage
a learning event*